

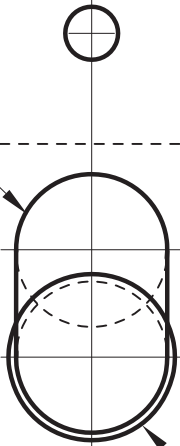
# VML60 MORTICE LOCK INSTALLATION TEMPLATE



60mm BACKSET

2x HOLES-20mm DIA FOR CYLINDER

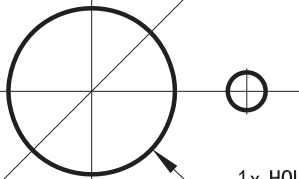
2x PILOT HOLES-2.5mm DIA



1x HOLE-22mm DIA FOR TURNKNOB

DRILL REQUIRED HOLE POSITION 5mm DIA FOR ROUND ROSE FURNITURE

HANDLE HEIGHT

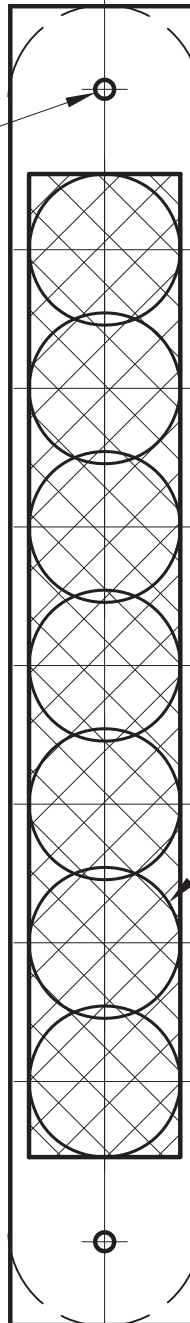


1x HOLE-22mm DIA FOR SPINDLE

2x HOLES-7mm DIA FOR PLATE FURNITURE

ALIGN WITH BOTTOM OF FACE PLATE

FOLD THE ABOVE DOTTED LINE ALONG EDGE OF DOOR



60mm BACKSET

2x HOLES-20mm DIA FOR CYLINDER

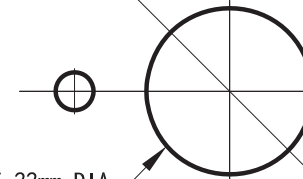
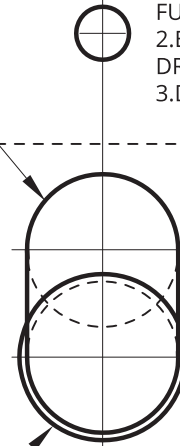
1x HOLE-22mm DIA FOR TURNKNOB

7x HOLES-20mm DIA 92mm DEEP

1x HOLE-22mm DIA FOR SPINDLE

2x HOLES-7mm DIA FOR PLATE FURNITURE

FOLD THE ABOVE DOTTED LINE ALONG EDGE OF DOOR



ALIGN WITH BOTTOM OF FACE PLATE

## WARNING!

1. ONLY DRILL THE HOLES THAT ARE REQUIRED TO SUIT THE LOCK FUNCTION
2. ENSURE LOCK IS REMOVED BEFORE DRILLING ANY HOLES
3. DRILL EACH HOLE FROM BOTH SIDES

DRILL REQUIRED HOLE POSITION 5mm DIA FOR ROUND ROSE FURNITURE

HANDLE HEIGHT