

Door Controls

Contents

Door Controls	Page
Surface Mounted Door Closers	2 - 5
Door Closer Accessories	6
Transom Closers	7
Transom Closer Accessories	8
Non Hydraulic Pivots	9

Door Controls

Surface Mounted Door Closers

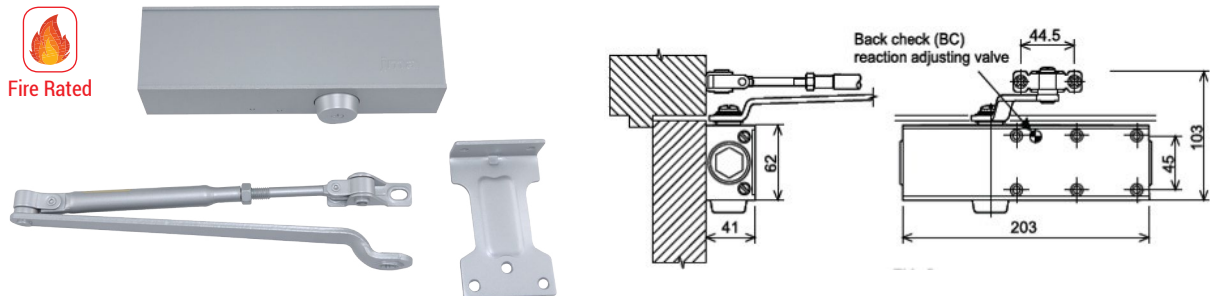
Product Code	Description	Finish
DC8003BC-S	Size 3 Adjustable Backcheck Suitable for 40 - 65 kg Doors	SIL

Features:

- Size 3 power
- Adjustable back check
- Closing and latching speed controls
- Parallel arm bracket included
- Suitable for standard, parallel and top jamb mounting
- 2 Hour Fire Rated
- Optional slide track or hold open arm

Power Size	Standard / Top Jamb Installation		Parallel Installation		Door Weight (Kgs)
	Internal Door width (mm)	Exterior Door width (mm)	Internal Door width (mm)	Exterior Door width (mm)	
3	950	900	900	800	40 - 65

*'Exterior Doors' are doors subject to wind shear



Accessories to suit DC8003BC-S

Product Code	Description	Finish
8001ST	Slide Track Arm suit 8003/8024 Closer	SIL
8001HO	Hold Open Arm suit 8003/8024 Closer	SIL
TNUT16	Bolt Through Fixing Pack for Door Closers on Hollow Doors	SS



8001ST



8001HO



TNUT16

Door Controls

Surface Mounted Door Closers

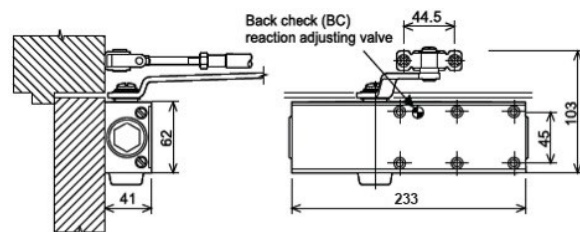
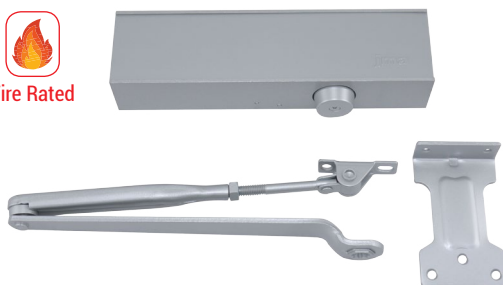
Product Code	Description	Finish
DC8024BC-S	Size 2-4 Adjustable Backcheck Suitable for 25 - 85 kg Doors	SIL

Features:

- Size 2 to 4 power adjustable
- Adjustable back check
- Closing and latching speed controls
- Parallel arm bracket included
- Suitable for standard, parallel and top jamb mounting
- 2 Hour Fire Rated
- Optional slide track or hold open arm

Power Adjustment Size	Standard / Top Jamb Installation		Parallel Installation		Door Weight (Kgs)
	Internal Door width (mm)	Exterior Door width (mm)	Internal Door width (mm)	Exterior Door width (mm)	
2	900	800	800	700	25 - 45
3	950	900	900	800	40 - 65
4	1050	950	950	900	60 - 85

*'Exterior Doors' are doors subject to wind shear



Accessories to suit DC8024BC-S

Product Code	Description	Finish
8001ST	Slide Track Arm suit 8003/8024 Closer	SIL
8001HO	Hold Open Arm suit 8003/8024 Closer	SIL
TNUT16	Bolt Through Fixing Pack for Door Closers on Hollow Doors	SS



8001ST



8001HO



TNUT16

Door Controls

Surface Mounted Door Closers

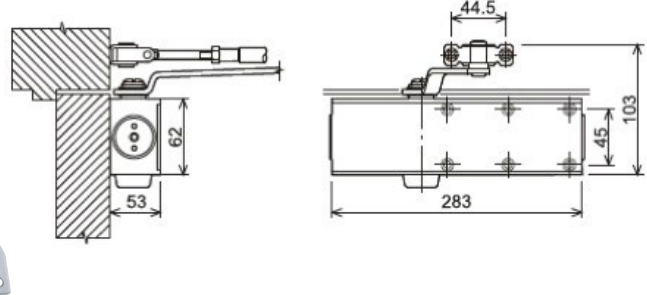
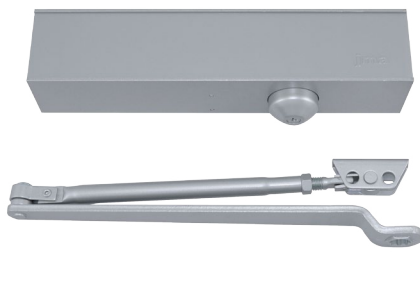
Product Code	Description	Finish
DC8025BCD-S	Size 2-5 Adjustable Back Check Suitable for 25 - 120 kg Doors	SIL

Features:

- Size 2 to 5 power adjustable
- Optional delayed action closing
- Adjustable back check
- Closing and latching speed controls
- Parallel arm bracket included
- Suitable for standard, parallel and top jamb mounting
- 2 Hour Fire Rated
- Optional slide track arm

Power Adjustment Size	Standard / Top Jamb Installation		Door Weight (Kgs)
	Internal Door width (mm)	Exterior Door width (mm)	
2	900	800	25 - 45
3	950	900	40 - 65
4	1050	950	60 - 85
5	1200	1050	80 - 120

'Exterior Doors' are doors subject to wind shear



Accessories to suit DC8025BCD-S

Product Code	Description	Finish
8002ST	Slide Track Arm suit 8014/8025 Closer	SIL
TNUT16	Bolt Through Fixing Pack for Door Closers on Hollow Doors	SS



8002ST



TNUT16

Door Controls

Surface Mounted Door Closers

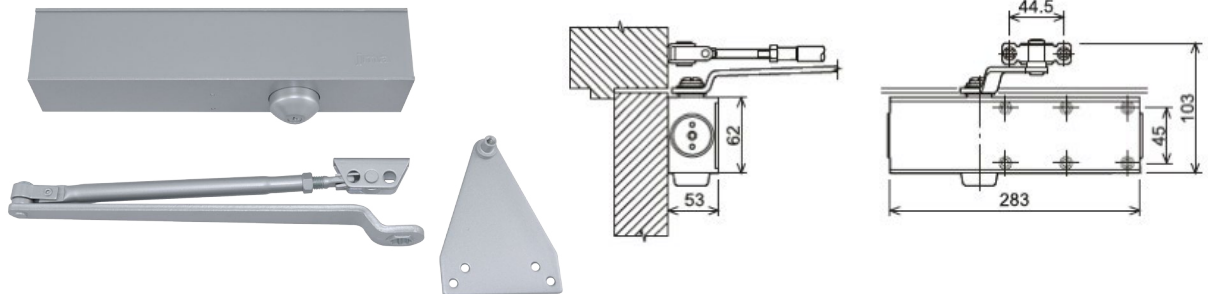
Product Code	Description	Finish
DC8014BCD-S	Size 1-4 Adjustable Backset Disabled Compliant 15 - 85 kg Doors	SIL

Features:

- Complies with AS1428 design for access & mobility
- Size 1 to 4 power adjustable
- Optional delayed action closing
- Adjustable back check
- Closing and latching speed controls
- Parallel arm bracket included
- Suitable for standard, parallel and top jamb mounting
- 2 Hour Fire Rated
- Optional slide track arm

Power Adjustment Size	Standard / Top Jamb Installation		Door Weight (Kgs)
	Internal Door width (mm)	Exterior Door width (mm)	
1	800	700	15 - 30
2	900	800	25 - 45
3	950	900	40 - 65
4	1050	950	60 - 85

'Exterior Doors' are doors subject to wind shear



Accessories to suit DC8014BCD-S

Product Code	Description	Finish
8002ST	Slide Track Arm suit 8014/8025 Closer	SIL
TNUT16	Bolt Through Fixing Pack for Door Closers on Hollow Doors	SS



8002ST



TNUT16

Door Controls

Door Closer Accessories



Product Code	Description	Finish
8001ST	Slide Track Arm suit 8003/8024 Closer	SIL
8002ST	Slide Track Arm suit 8014/8025 Closer	SIL



Product Code	Description	Finish
8001HO	Hold Open Arm suit 8003/8024	SIL



Product Code	Description	Finish
TNUT16	Hollow door fixing kit. 16mm Dia Disc with M5x75mm Screws Pack of 4	SS



Product Code	Description	Finish
SSDS250	Sequence Selector 250mm	SIL

Door Controls

Transom Closers

Transom Closer with standard arm

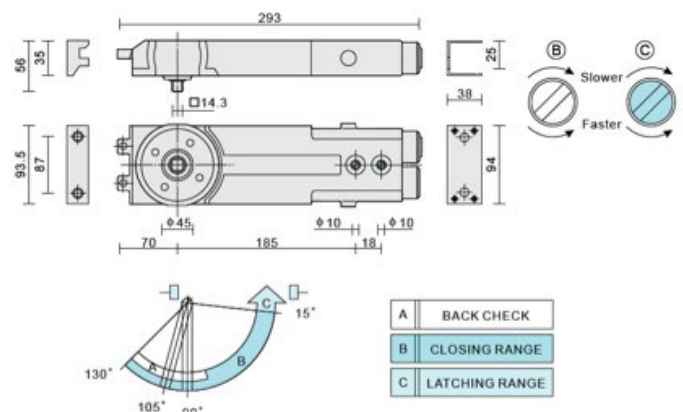
Product Code	Description
TC1-3HO-90-12	Size 1-3 Hold Open 90Deg - Standard Arm - 12mm Spindle
TC1-3HO-90-17	Size 1-3 Hold Open 90Deg - Standard Arm - 17mm Spindle
TC1-3HO-90-22	Size 1-3 Hold Open 90Deg - Standard Arm - 22mm Spindle
TC1-3HO-105-17	Size 1-3 Hold Open 105Deg - Standard Arm - 17mm Spindle
TC1-3NHO105-12	Size 1-3 Non Hold Open - Standard Arm - 12mm Spindle

Transom Closer with trim style arm

Product Code	Description
TC1-3HOT-90-17	Size 1-3 Hold Open 90Deg - Trim Style Arm - 17mm Spindle
TC1-3HOT-90-22	Size 1-3 Hold Open 90Deg - Trim Style Arm - 22mm Spindle
TC1-3HOT-105-17	Size 1-3 Hold Open 105Deg - Trim Style Arm - 17mm Spindle

Features:

- Suitable for timber and aluminium doors
- Size 1 to 3 power adjustable
- Maximum door weight 120kg
- Available in Hold open 90Deg / 105Deg / Non Hold Open
- Suitable for single and double action doors
- Adjustable back check
- Closing and latching speed controls
- Standard arm suits timber & aluminium doors 45mm +
- Trim style arm suits timber doors 35mm +



Standard arm



Trim style arm



Bottom Assembly

Door Controls

Transom Closer Accessories



Product Code	Description	Finish
TCP01	Transom Cover Plate 352 x 110 x 1.2mm	SS



Product Code	Description	Finish
THRP	Head Re-inforcing Plate 349 x 129 x 5mm	SIL

For use where the head of the frame requires extra strength when installing a Transom Closer



Product Code	Description	Finish
TBPA	Bottom Pivot Assembly Including Fixings	SIL



Product Code	Description
TASTD	Standard Top Arm Including Fixings



Product Code	Description
PP-TASTD	Fixing Pack for Standard Top Arm Including Block Cover

Door Controls

Non Hydraulic Pivots



Product Code	Description
PS01	Pivot Set Timber 200kg Capacity



Product Code	Description
PS02	Pivot Set Universal 90kg Capacity



Product Code	Description
PADJ	Top Pivot Arm Adjustable



Product Code	Description
PFB01	Pivot Floor Bearing Heavy Duty 200kg



Product Code	Description
BS01	Bottom Strap for PFB01