



Hygienic Friction Stay

DC - 8504

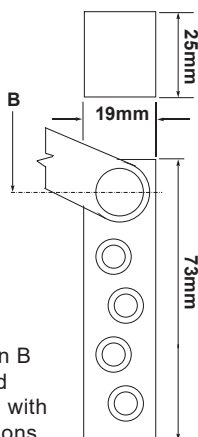
Hospital / Nursing Homes / Aged Care



Features

- Inverted design prevents dirt, dust & bacteria build up in channel - easy to wipe over during cleaning.
- Vivid Friction stays available in two models - F1 and F2
 - F1 suitable for door openings 457mm to 584mm and
 - F2 suitable for door openings 990mm to 1145mm
- 2 x Track lengths to suit openings from 457mm to 1145mm – 85° to 110°
- Suitable for single acting exterior and interior doors
- Non-Handed – refer fitting instructions

STANDARD JAMB BRACKET

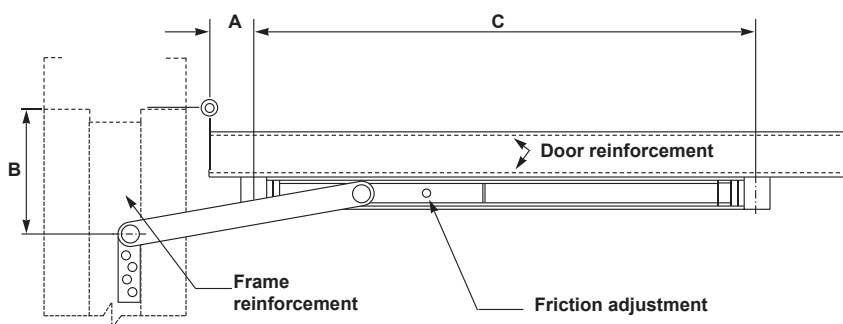


Mounting dimension B must be determined from chart included with installation instructions.

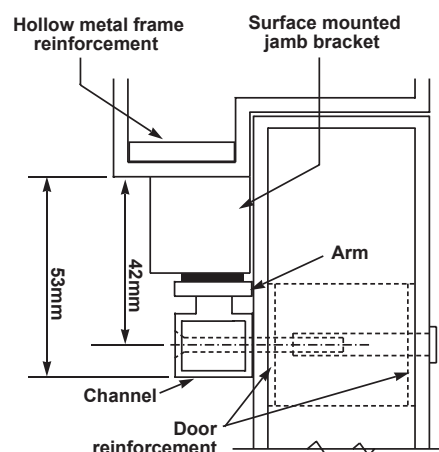
Specifications

Door Type	Timber or Metal
Frame	Metal door frames to be reinforced where the jamb bracket is attached
Door Thickness	35mm – 57mm
Door width	457mm – 1145mm
Fixtures	Sexbolts for channel attachment
Material	Steel
Finish	Satin chrome plate

BUTT HINGE MOUNTING DETAILS



CROSS SECTION IN CLOSED POSITION





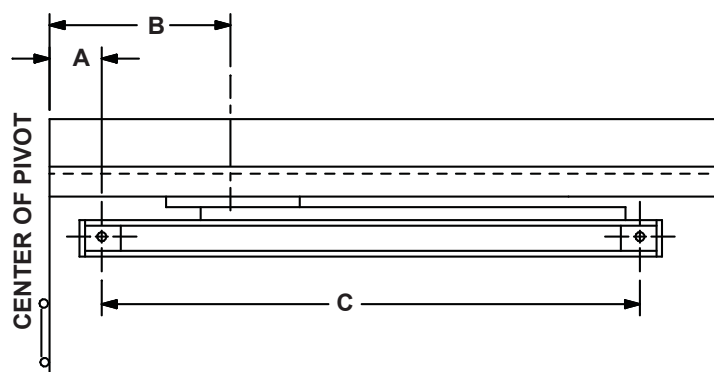
Hygienic Friction Stay

DC - 8504

Installation

Installation Instructions

- Overhead Friction Stays must be installed before closers
- Hollow metal frames or hollow metal doors should be reinforced
- Friction tension adjustment - turn the screw clockwise to increase friction and counter clockwise to decrease friction
- Install the jamb bracket on the stop
- Install the channel on the door with the shock spring towards the hinge edge of the door
- Dimensions A and B are from the centre line of the pivot not the edge of the door.



Model F1 Friction Stay - 457mm – 584mm opening – 90°

- A – 38mm
- B – 92mm
- C – 375mm

Model F2 Friction Stay - 990mm – 1145mm opening – 90°

- A – 354mm
- B – 221mm
- C – 530mm